

SOUTH CAMBRIDGESHIRE LOCAL STRATEGIC PARTNERSHIP

REPORT TO: South Cambridgeshire Local Strategic Partnership 19th November 2009

AUTHOR/S: Sarah Ferguson, Area Manager Localities and Partnership (Children and Young People Services), Cambridgeshire County Council

DEVELOPING THE ROLE OF THE AREA PARTNERSHIP FOR CHILDREN AND YOUNG PEOPLE AND THE CHILDREN'S TRUST FOR CAMBRIDGESHIRE

Purpose

1. To update members of the LSP on developments in the Children's Trust arrangements for Cambridgeshire, and the implications for the South Cambridgeshire and Cambridge City Area Children and Young People's Partnership.
2. To invite members of the LSP to consider how the Area Partnership can be effectively represented on the LSP, and in the context of a combined LSP with the City.

Background

3. Development of a Children's Trust and Children's Trust Board has taken place over summer 2009 in response to the need to:
 - Strengthen the relationship between the area partnerships and the countywide partnership.
 - Respond to the Cambridgeshire Together requirements to review partnership arrangements.
 - Respond to the statutory guidance on the creation of formal Children's Trust Boards and the increasing expectations being placed on Trusts.
4. A working group of members from Cambridge City Council, Cambridgeshire County Council, the board of Cambridgeshire NHS, Cambs Constabulary, Voluntary and Community Sector organisations, and officers from the district and county councils have met over the summer to develop Children's Trust arrangements. These clarify and confirm the purpose of the Trust, the groups that will be needed to deliver on this purpose and the structure to support these arrangements. The purpose and structure diagram is attached as Appendix One.
5. Work is now underway to clarify and confirm the role and responsibilities of the Area Partnerships and their relationship to the Trust and to the Local Strategic Partnerships. The Children and Young People's Strategic Partnership (CYPSP) asked for a template to be developed to create consistency across the county. The attached Roles and Responsibilities (Appendix Two) provides an initial outline. Terms of reference that are aligned with those of the Trust Executive and Board will be developed after consultation with the three area partnerships on their role.

Current focus for the Area Partnership

6. The Children and Young People's Area Partnership has been focussing on the following activities in the last two quarters:
 - Signing off the Children and Young People's Plan for the Area (Big Plan 2).

- Discussing draft terms of reference for the Area Partnership following discussions about the future shape and purpose of Cambridgeshire's Children's Trust Board.
 - Considering how the Partnership can engage children, young people, parents and carers more systematically in decision making the future – to be revisited at January meeting.
 - Agreeing to prepare a business plan for the Partnership.
 - Appointing a Researcher has been appointed on its behalf to carry out research into deprivation and disadvantage for children and young people in South Cambridgeshire and Cambridge City, making recommendations about specific actions the Partnership needs to focus on to make an impact.
7. The research mentioned in the last bullet point will be finalised in December 09. Appendix Three outlines the brief and intention of the research. South Cambridgeshire LSP may wish to receive a further report on this once it has been completed.

Recommendations

8. To note the changes being made to the County Children's Trust arrangements.
9. To comment on the proposed role of the Area Partnership and what links can be made to the South Cambridgeshire LSP to ensure effective planning on shared priorities.
10. To consider receiving a report at a future meeting on the outcome of the research outlined in Appendix Three.

Contact Officer: Sarah Ferguson
Area Manager Localities and Partnership (South
Cambridgeshire and Cambridge City), Cambridgeshire County
Council
01223 712588/ 0791 723 5538
sarah.ferguson@cambridgeshire.gov.uk

APPENDIX ONE: The Children's Trust in Cambridgeshire

Mission: to improve outcomes for all children and young people in Cambridgeshire and ensure effective safeguarding is in place.

The function of the Trust - The Children's Trust is the commissioning body for the development and delivery of services for children and young people in Cambridgeshire. It will work with and through those who provide services to children, young people and families to develop an overall picture of children's needs and put in place provision through public, private, voluntary and community providers to meet those needs. Creating, implementing and reviewing the Children and Young People's Plan annually will be an important part of this.

The definition of commissioning the Trust uses is:

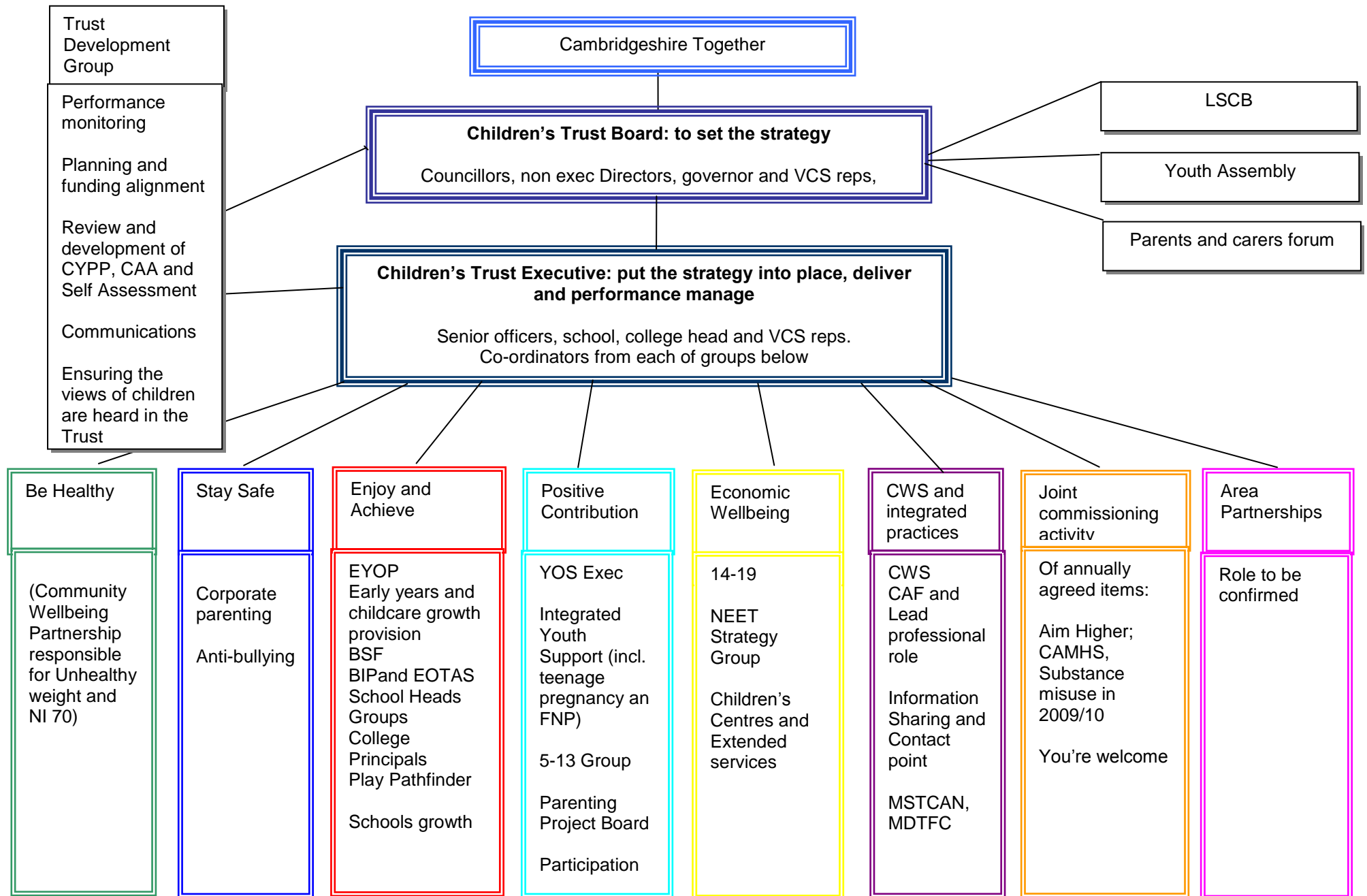
- Commissioning for children and young people is the overall process by which services are planned and implemented by partners in the Trust, taking into account the needs of children, young people and their families in their area and selecting the most appropriate provider(s) to deliver that service, regardless of whether they are from the public, private or third sector, measuring and reviewing performance and holding providers to account in order to improve outcomes.

This means that the role of the Trust is to:

- Ensure the right services are in place to meet needs.
- Ensure partners work together to plan and deliver services effectively making best use of resources
- To act as a champion for children and young people in Cambridgeshire, both within individual organisations and through the partnerships they work with, including Cambridgeshire Together.

The Children's Trust Board: their role is to set the strategy for the Trust, be both challenged and supported by the Local Safeguarding Children Board, the Youth Assembly and Parents and Carers Forum The Trust Board will be responsible for high level strategic commissioning of services for children and young people and significantly for the Big Plan 2. To do this, it will need to delegate work to others with the relevant expertise and capacity and will seek progress updates as well as final sign off. It may delegate this responsibility to the Executive.

The Board is expected to meet *4-6 times a year*, significantly in October/November and February, to fit the business planning and strategic decision making cycles.



APPENDIX TWO

Area Children and Young People's Strategic Partnership

Roles and responsibilities

- To deliver on activity that requires an area partnership approach to objectives and actions identified within the children and young people's plan (the Big Plan 2).
- To performance manage area partnership activity
- To identify gaps in outcomes for children, young people and families in their area, and identify how these may be met locally, seeking support as needed from the county wide Trust Development Group.
- To support community engagement, working to enable and empower communities to support themselves and to promote community cohesion.
- To champion children, young people and families and support their participation.

Membership of other groups;

The area partnership will be asked to:

Identify representatives of the partnership to sit on the Children's Trust Board (usually the councillor members from the district councils) and the Trust Executive (there are likely to be existing members who both sit on the Area Partnership and the Trust Executive, the Area Partnership will need to agree if this is sufficient or if a specific additional area partnership representative is needed)

Identify the representation of the area partnership with the Local Strategic Partnership, Local Safeguarding Children Board via the Area Safeguarding Committees and the county wide Participation Groups for children, young people and parents and carers.

APPENDIX THREE

South Cambridgeshire and Cambridge City Children and Young People's Area Partnership

RESEARCH BRIEF – CHILDREN AND YOUNG PEOPLE LIVING IN DEPRIVATION, THE DISAFFECTED AND THOSE AT RISK OF DISAFFECTION

Background

Big Plan 2 (2009 – 2012) outlines the collective priorities for improving outcomes for children and young people in Cambridgeshire. The SCC CYP Area Partnership has a key role in relation to the delivery of the plan priorities, both in relation to the Children's Trust Board (Children and Young People's Strategic Partnership) and the Local Strategic Partnership. Discussions are currently focussing on the future role of the Area Partnership in relation to the following three functions:

1. Identifying local need and priorities
2. Commissioning joint work
3. A scrutiny role in relation to performance against shared priorities

The Partnership has decided to focus its activity on two of the Big Plan 2 priorities (July 9th 2009):

- Impact of Growth and demographic change
- Children and young people living in deprivation, the disaffected and those at risk of disaffection

At its July meeting 2009, the Partnership agreed to commission some research to clarify and hone the priority needs for children and young people in the area in relation to the second of these priorities. This is with a view to influencing future commissioning decisions, and potentially joint commissioning arrangements between members of the Partnership itself.

The Partnership

The research is being joint funded by Cambridge City Council and Cambridgeshire County Council, with Cambridge City Council as the lead commissioning body.

Research Brief

- To prepare a report summarising the specific needs of children and young people in South Cambridgeshire and Cambridge City in respect of deprivation and disaffection
- To indicate where current activity is underway to address these issues
- To highlight geographical areas and/ or groups who might form the focus of future action on the part of the Partnership.
- To focus on priorities (in addition to or including those identified in Big Plan 2 2.1D) where the Area Partnership may wish to jointly commission future work and/ or provide a scrutiny role to monitor impact of interventions.
- To make recommendations about how the priorities should be ranked in terms of importance and immediacy

Scope

The research should capture the needs and issues as they relate to children, young people and their families, spanning from pregnancy to age 19 years.

Methodology

The research will be based on secondary data, and primarily desktop. It is not the intention to undertake primary research, but rather to use the range of existing information about needs of young people and families, focussing on implications for the South Cambridgeshire and Cambridge City area.

Funding available

The total amount available to fund the research is £3,000

Timescales

Bids are to be sent to Ken Hay at the address below by 1st September 2009.

The research is to be completed by October 31st 2009.

Process for submitting bids

Bids should be submitted addressing the following headings:

1. CV/ qualifications and relevant experience of individual where individual applying
2. Core business of organisation where applicable, and qualifications for undertaking research work
3. Intended lines of enquiry and data sources to be used
4. Outline of final report headings to indicate intended outcomes from research and how they will be presented
5. Breakdown of costs

Contacts

Bids should be submitted to:

Ken Hay
Cambridge City Council
Community Development
4 Mandela House
Regent Street
Cambridge
CB2 1BY

For more information contact:

Sarah Ferguson
Children and Young People's Services, Cambridgeshire County Council
Tel: 0791 723 5538